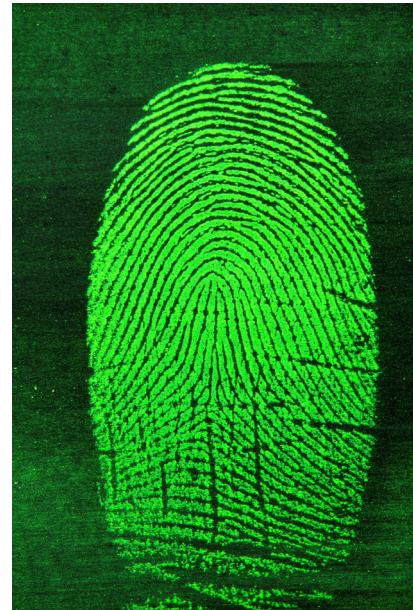




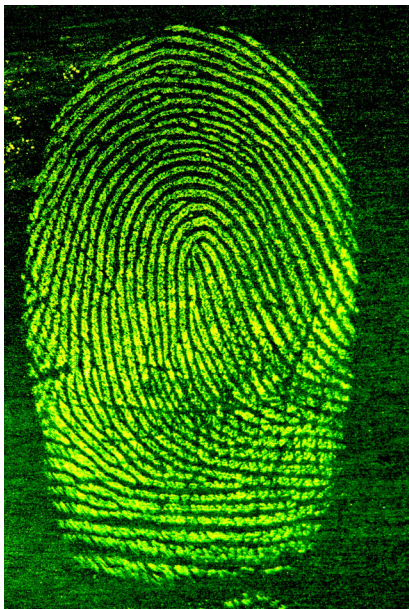
Arch

In arches, the ridges enter on one side of the impression and flow out the other side with a rise or wave in the center.



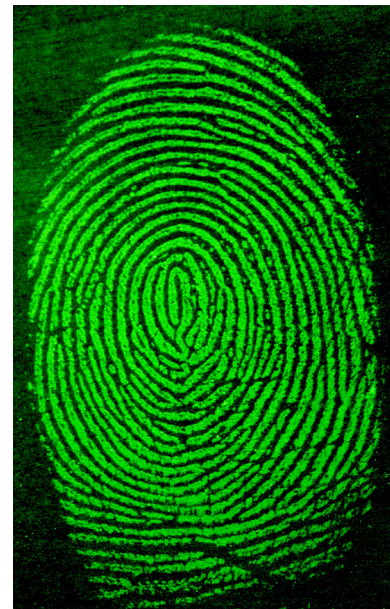
Tented Arch

Tented arches are similar to plain arches, with the exception that the ridges in the center form a definite vertical angle.



Loop

In a loop pattern, the ridges will flow in one side, recurve (loop around), and exit the pattern on the same side from which it entered.



Whorl

In a whorl pattern, the friction ridges on a finger form circle. It may look like a spiral, or an oval.