

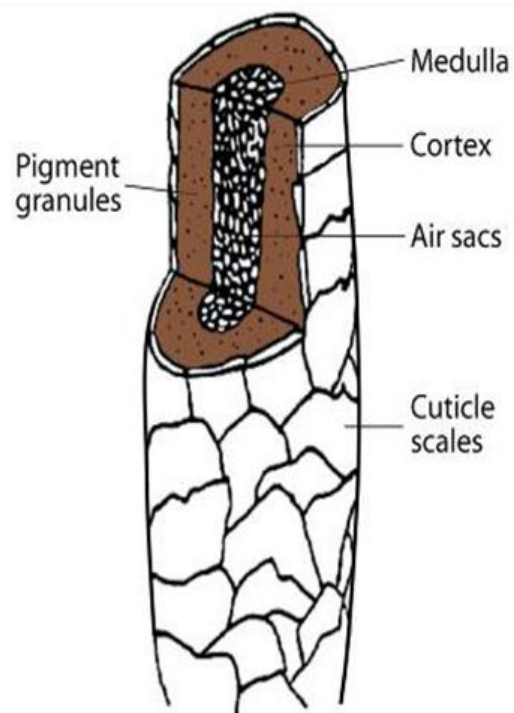
Three parts of the hair

Composed of:

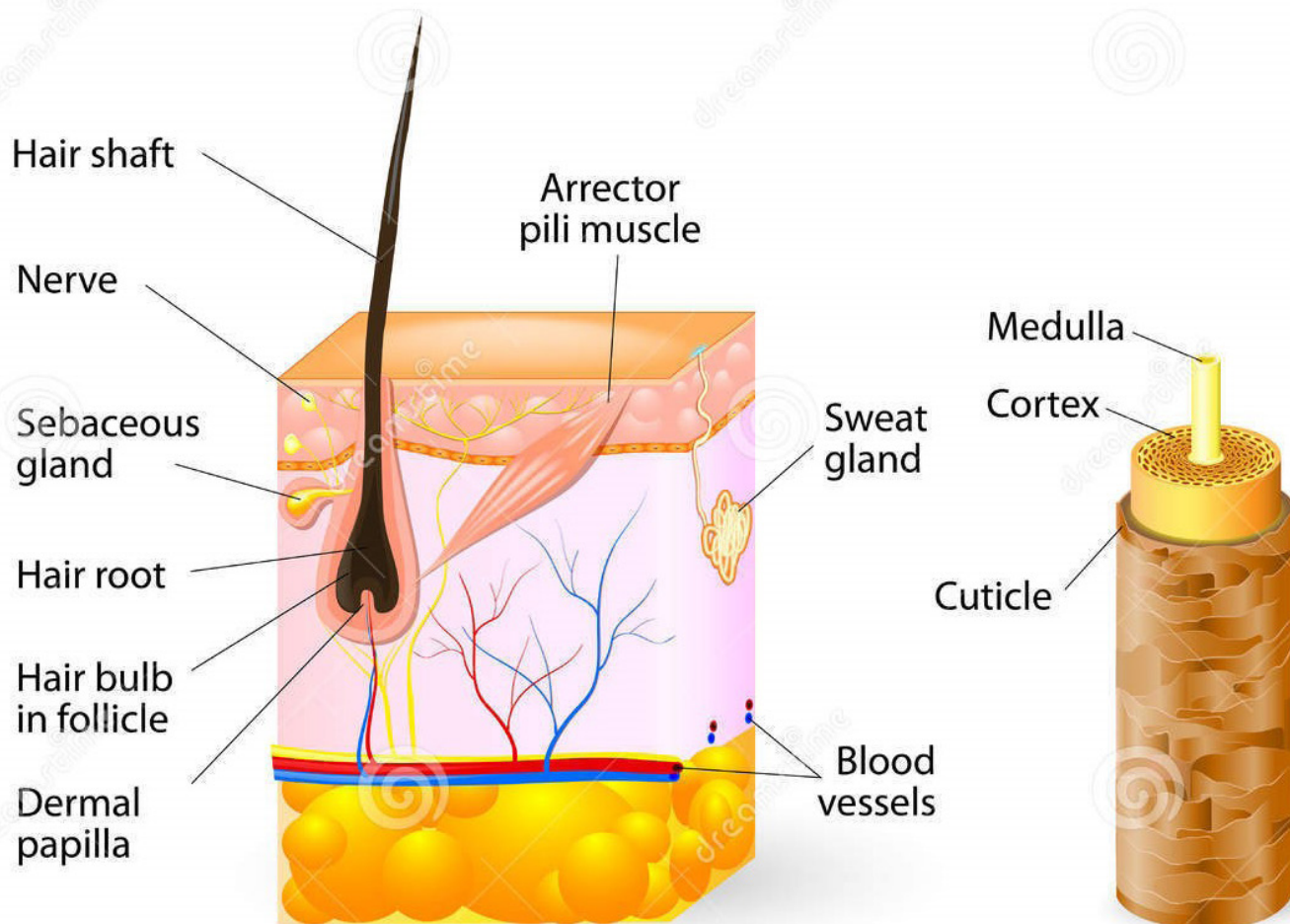
Cuticle—outside covering, made of overlapping scales

Cortex—inner layer made of keratin and embedded with pigment; also contains air sacs called cortical fusi

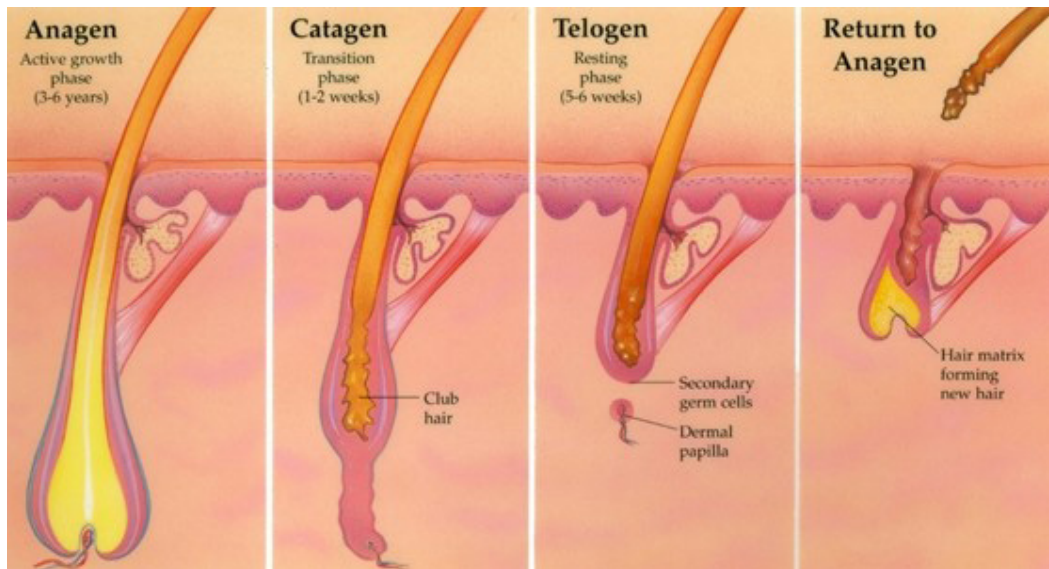
Medulla—inside layer running down the center of the cortex



Hair Anatomy



Phases of Hair Growth



Forcibly Removed Hair vs. Naturally shed (Microscopic)



vs.

